

The DUBLIN CAROL (Kneel We By the Manger)

© B. Black

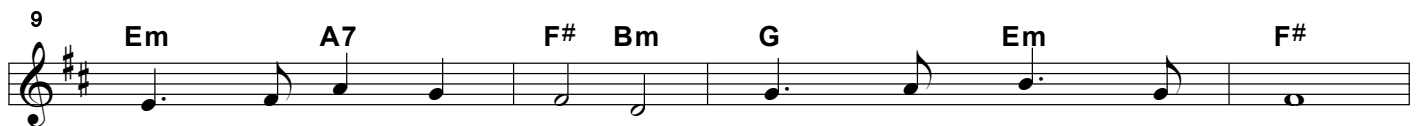
Slowly with feeling mm = 100



mf KNEEL WE BY THE MAN-GER BED OF STRAW AND HAY
SEE WHO KNEEL BE - SIDE US WISE MEN FROM THE EAST
BLEST ARE WE WHO SEE HIM KNOW - ING TOO HIS NAME



CRA - DLE FOR A BA - BY SLEEP - ING AS WE PRAY
COME TO DO HIM HOM - AGE NOW BY LOVE IN - CREASED
GOD HAS SENT THIS SA - VIOR END TO SIN AND SHAME



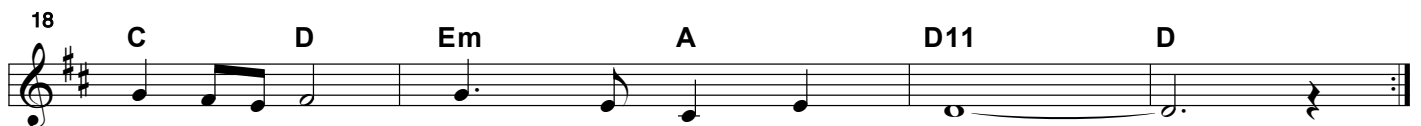
BORN THE SON OF MA - RY PRINCE OF HEA - VEN'S PEACE:
JO - SEPH TO PRO - TECT HIM SHEP - HERDS CALLED TO SEE
FROM THIS MID - NIGHT STA - BLE LOVE WILL FILL THE EARTH



SEE HOW HE SMILES IN HIS DREAMS AS _____
BEASTS FROM THE COLD WIN - TER FIELDS KEEP HIM
DAYS DARK AND SAD AT AN END THRO' THIS



AN - GELS SING JOY TO THE WORLD GLO - RI - A IN EX -
WARM WITH THEIR SWEET STEAM - Y BREATH GLO - RI - A IN EX -
CHILD BRING - ING LIGHT TO US ALL GLO - RI - A IN EX -



CEL _____ SIS CHRIST IS BORN THIS DAY! _____
CEL _____ SIS CHRIST IS BORN THIS DAY! _____
CEL _____ SIS CHRIST IS BORN THIS DAY! _____