

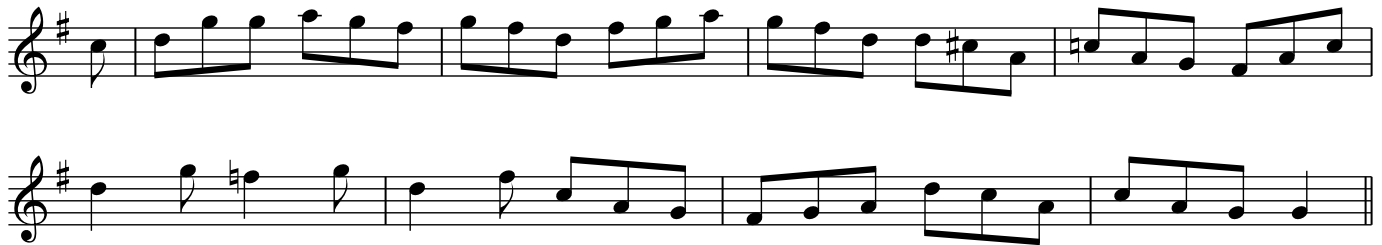
**Tunes from "The Leitrim Fiddler Volume 1"
(Joe Liddy)**

MOLLY WEE

*Joe Liddy
ABC/arr. BB*

The musical score for "Molly Wee" is written in treble clef, 6/8 time, and the key of D major (one sharp). The piece consists of ten staves of music. The first staff begins with a treble clef, a key signature of one sharp (F#), and a 6/8 time signature. The melody is composed of eighth and sixteenth notes, with some beamed eighth notes. The second staff ends with a repeat sign. The third and fourth staves continue the melody. The fifth staff also ends with a repeat sign. The sixth and seventh staves continue the melody. The eighth staff ends with a repeat sign. The ninth and tenth staves provide two alternative endings, labeled '1' and '2', which conclude the piece with different melodic phrases.

***Tunes from "The Leitrim Fiddler Volume 1"
(Joe Liddy)***



NOTE:

(Online) Links below can be click-opened once page is downloaded.

(Offline) Copy and paste link into browser address box.

SOUND FILE: www.capeirish.com/ittl/tunefolders/34/341/341-mp3/341066.mp3

ABC FILE: www.capeirish.com/ittl/tunefolders/34/341/341-ABC.rtf

TUNEFOLDER 341 Index: www.capeirish.com/ittl/tunefolders/34/341/341-table.html