

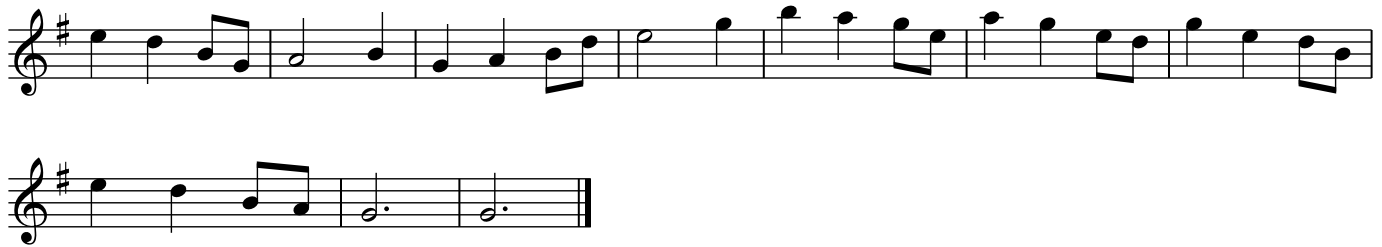
**Tunes from "The Leitrim Fiddler" Volume 2  
(Joe Liddy)**

**The BELHAVEL WALTZ**

*Joe Liddy  
ABC/arr. BB*

The musical score for "The Belhavel Waltz" is presented in a single-line format on ten staves. The key signature is one sharp (F#) and the time signature is 3/4. The melody begins with a treble clef and a repeat sign. The first ending is marked with a '1' and the second with a '2'. The piece concludes with a double bar line and repeat dots.

***Tunes from "The Leitrim Fiddler" Volume 2  
(Joe Liddy)***



***NOTE:***

***(Online) Links below can be click-opened once page is downloaded.***

***(Offline) Copy and paste link into browser address box.***

***SOUND FILE: [www.capeirish.com/ittl/tunefolders/34/342/342-mp3/342007.mp3](http://www.capeirish.com/ittl/tunefolders/34/342/342-mp3/342007.mp3)***

***ABC FILE: [www.capeirish.com/ittl/tunefolders/34/342/342-ABC.rtf](http://www.capeirish.com/ittl/tunefolders/34/342/342-ABC.rtf)***

***TUNEFOLDER 342 Index: [www.capeirish.com/ittl/tunefolders/34/342/342-table.html](http://www.capeirish.com/ittl/tunefolders/34/342/342-table.html)***