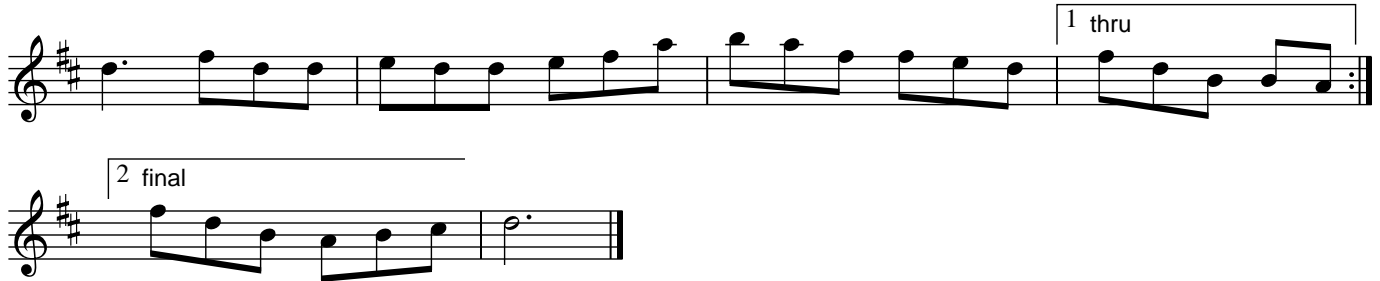


Tunes from O'Neill's "Music of Ireland" ("the 1850")
Jigs #701-1115

GALWAY TOM (2nd setting)

The musical score for "Galway Tom (2nd setting)" is written in G major (one sharp) and 6/8 time. It consists of ten staves of music. The first staff begins with a treble clef, a key signature of one sharp (F#), and a 6/8 time signature. The melody is composed of eighth and sixteenth notes, with some triplet-like patterns. The second staff ends with a double bar line and repeat dots. The third staff continues the melody. The fourth staff features two first endings, labeled '1' and '2', which are separated by a double bar line with repeat dots. The fifth staff continues the melody. The sixth staff ends with a double bar line and repeat dots. The seventh staff continues the melody. The eighth staff features two first endings, labeled '1' and '2', which are separated by a double bar line with repeat dots. The ninth staff continues the melody. The tenth staff ends with a double bar line and repeat dots.

***Tunes from O'Neill's "Music of Ireland" ("the 1850")
Jigs #701-1115***



NOTE:

(Online) Links below can be click-opened once page is downloaded.

(Offline) Copy and paste link into browser address box.

SOUND FILE: www.capeirish.com/ittl/tunefolders/49/493/493-mp3/493130.mp3

ABC FILE: www.capeirish.com/ittl/tunefolders/49/493/493-ABC.rtf

TUNEFOLDER 493 Index: www.capeirish.com/ittl/tunefolders/49/493/493-table.html