

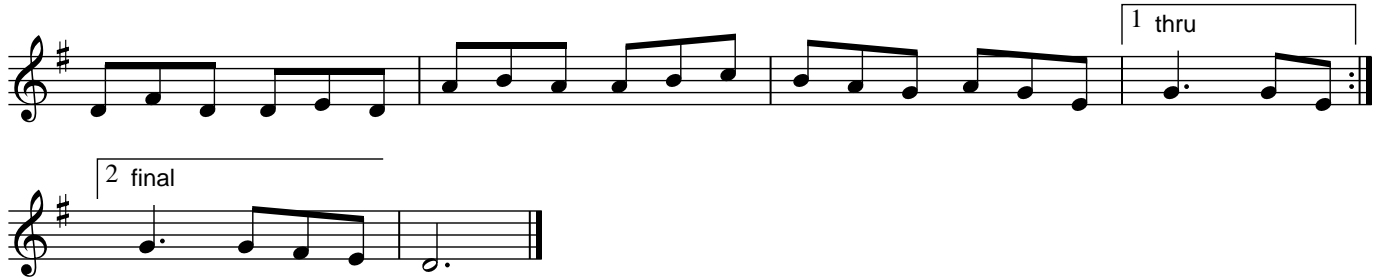
**Tunes from "Treoir" 1974-present
(CCE Dublin)**

HELVIC HEAD

ABC/arr. BB

The musical score for "Helvic Head" is written in G major (one sharp) and 6/8 time. It consists of ten staves of music. The first staff begins with a treble clef, a key signature of one sharp (F#), and a 6/8 time signature. The melody is composed of eighth and quarter notes, with some rests. The piece concludes with a double bar line and repeat dots. The notation is clear and legible, suitable for a printed music book.

***Tunes from "Treoir" 1974-present
(CCE Dublin)***



NOTE:

(Online) Links below can be click-opened once page is downloaded.

(Offline) Copy and paste link into browser address box.

SOUND FILE: www.capeirish.com/ittl/tunefolders/57/57-mp3/57060.mp3

ABC FILE: www.capeirish.com/ittl/tunefolders/57/57-ABC.rtf

TUNEFOLDER 57 Index: www.capeirish.com/ittl/tunefolders/57/57-table.html