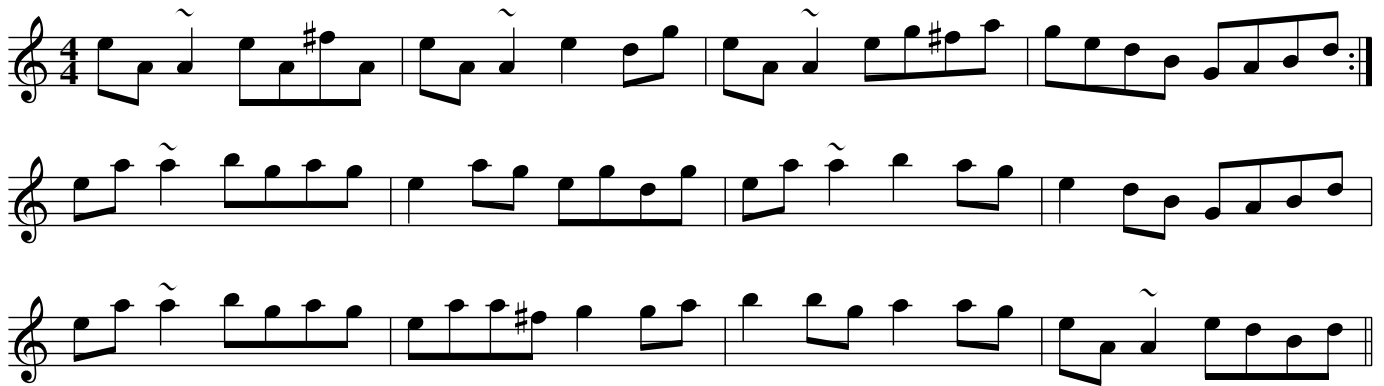


# The Hills of Clogher (reel)

Flowers of Red Hill

*file ID bsmi.3/30hills\_c*



X:30

T:Hills of Clogher (reel)

T:Flowers of Red Hill

B:BSMI3.7

C:file ID bsmi.3/30hills\_c

R:reel

Q:180

M:4/4

L:1/8

K:Am

eA~A2 eA^fA|eA~A2 e2dgleA~A2 eg^falgedB GABd :|

ea~a2 bgagle2ag egdglea~a2 b2agle2dB GABd|

ea~a2 bgagleaa^f g2galb2bg a2agleA~A2 edBd ||