

# The Foxhunt(er)

file ID fs.2/023fohx

5

9

13

17

21

25

29

last time

ABC file on next page

X:23  
T:Foxhunt(er), The  
C:file ID fs.2/023foxh  
B:FS2.37c  
M:9/8  
L:1/8  
Q:150  
R:slip jig  
K:D  
D|FGF FDF G2E|FGF FDF E2D|  
"5"FGF FDF G2B|AFD DEF E2 :|  
%  
A|"9"|BcB BAG FGA|B2E E2F G2B|  
"13"ABc dcB ABc|d2D DEF E2 :|  
%  
d|"17"fgf fdf g2e|fgf fdf e2d|  
"21"fgf fdf g2b|afd def e2 :|  
%  
f|"25"gfe dcB AGA|B2E E2F G2B|  
"29"ABc dcB ABc|d2D DEF E2 :|  
"last time"d2D DEF E2D-|D6z3|]

# The Fox Hunter's Jig

file ID levey.1/024foxh

X:024

T:Fox Hunter's Jig, The

C:file ID levey.1/024foxh

B:Levey1.84

Y:"very quick"

Q:160

L:1/8

R:slip jig

M:9/8

K:D

F3 F3 G3|F3 F3 E2D|F3 F3 G2B|AFD D2F E2D :|

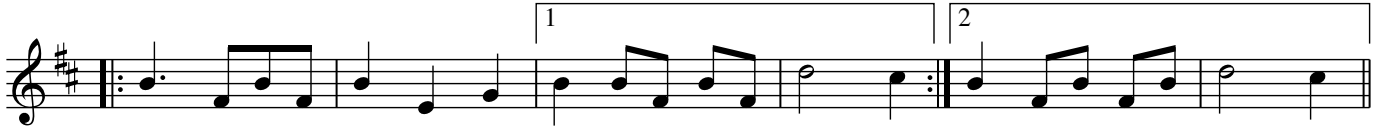
B3 BAG FGA|B2E E2F G2B|ABc dcB ABc|d2D D2F E2D :|

f3 f3 e2d|f3 f3 e2d|f3 f3 g2b|afd d2f e2d||

B3 BAG FGA|B2E E2F G2B|ABc dcB ABc|d2D D2F E2D- |D6z3|]

# Foxhunter's Hop Jig Set

file ID: add19/606foxhj  
Introduction: © Larry Mallette & Kendall Rogers



## Coleman's Foxhunter's (traditional)



X:606

T:Foxhunter's Hop Jig Set

C:file ID: add19/606foxhj

D:"A Stroll in the Park" tr.19a

M:3/4

L:1/8

R:waltz

C:Introduction: © Larry Mallette & Kendall Rogers

K:D % piano

%%MIDI program 1 00

|:f4g2|f4e2|d2f2g2|a4 e2:|

%%MIDI program 1 73 % add flute

|:B3 FBF|B2 E2 G2|1 B2 BF BF|d4 c2:|2 B2 FB FB|d4 c2||

T:Coleman's Foxhunter's (traditional)

R:jig

%Q:160

M:9/8

|:B3 B2A F2A|B2E E2F G2A|B3 B2A F2A|d2D D2F E2D:|

f3 fef g2e|f3 fef e2d|d2f fef g2e|a2f d2f e2d|

f3 fef g2e|f3 fef e2d|d2f fef g2b|a2f d2f e2d-|d6z3|]

## The Foxhunters' Jig



X:55

T: Foxhunters' Jig, The

B:RC2.265

F:file ID roche.2/055fhj

N:Note no third part to this version.

Q:160

L:1/8

M:9/8

R:jig

K:G

B3 BAB c2A|B3 dBG A2G|

B3 BAB c2e|dBG G2B A2G:|

e3 edc Bcd|e2A A2B c2e|

def gfe def|g2G G2B A2G:|

# The Fox Hunters' Jig

file ID dmi1001/059foxh

2

3

4

X:59

T:Fox Hunters' Jig, The

B:DMI.0422

C:file ID dmi1001/059foxh

Z:Nordberg/Black

R:slip jig

Q:150

M:9/8

L:1/8

K:D

FGF F2D G2E|FGF F2D E2D|FGF F2D G2B|AFD D2F E2D:|  
BcB BAG FGA|B2E E2F G2B|ABc dcB ABc|d2D D2F E2D:|  
fgf f2d g2e|fgf f2d e2d|fgf f2d g2b|afd d2f e2d:|  
gfe dcB AGF|B2E E2F G2B|ABc dcB ABc|d2D D2F E2D:|