

The Harvest Home (hornpipe)

file ID gstc/057harv



X:57

T:Harvest Home (hornpipe), The

C:file ID gstc/057harv

N:One of the "chestnuts" of ITM. Also known as "Cork Hornpipe".
(American musicians may be familiar with a version of this tune
called "Cincinnati Hornpipe").

Q:150

M:C|

R:hornpipe

K:D

A2|DAFA DAFA|dfec dcBA|eAfA gAfd|e2dB A2GE|
DAFA DAFA|dfec dcBA|(3efg fa gecA|dfec d2 :|
(3Bcd|eA A2 fA A2|gA A2 fA A2|eAfA gAfA|e2dB A2(3A,B,C|
DAFA DAFA|dfec dcBA|(3efg fa gecA|dfec d2z2||

HARVEST HOME

hornpipe

X:201

T:HARVEST HOME

B:"Irish Folk Dance Music" (J. O'Brien)

F:job/201hhh

Z:bill@capeirish.com

N:1:O'Brien's "florid" setting of this 'chestnut'!

N:2:Cut time (x>yz>x) throughout original. Other ornamentation per original.

Q:150

M:C|

R:hornpipe

K:D

"hornpipe"

AF|DAFA DAFA|dfec dc B/c/B/A/|eAfa gAfa|(3efe (3dcB (3ABA (3GFE|

"5"DAFA DAFA|d>fe>c d>c B/c/B/A/|eAfa gAfa|(3cec (3ABc d2 :|

AB|"9"eA (3AAA fA (3AAA|gA (3AAA fA (3AAA|eAfa gAfa|(3efe (3dcB (3ABA (3GFE|

"13"DAFA DAFA|dfec dc B/c/B/A/|eAfa gAfa|(3cec (3ABc d2 :|

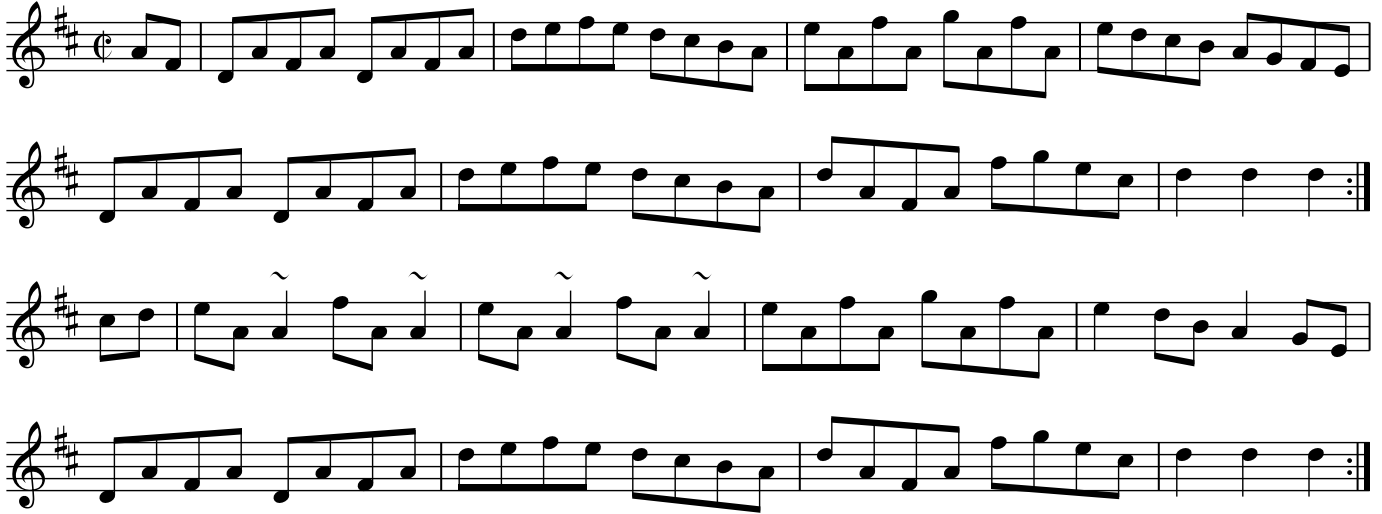
cd|"17"eA (3AAA fA (3AAA|gA (3AAA fA (3AAA|(3eAA (3fAA (3gAA (3fAA|\

(3efe (3dcB (3ABA (3GFE|

"21"DA (3FAF DA (3FGA|dfec dc B/c/B/A/|(3eAA (3fAA (3gAA (3fAA|(3cec (3ABc d2 :|

The Harvest Home

file ID: onmi.hps/087hhome



X:87

T:Harvest Home, The

B:ONMI.1603

Z:Brennan/Black

C:file ID: onmi.hps/087hhome

N:aka Cork HP, Cincinnati HP

R:hornpipe

Q:150

M:C|

L:1/8

K:D

AF|DAFA DAFA|defe dcBA|eAfA gAfA|edcB AGFE|
DAFA DAFA|defe dcBA|dAFA fgec|d2d2d2:|
cd|eA-A2 fA-A2|eA-A2 fA-A2|eAfA gAfA|e2dB A2GE|
DAFA DAFA|defe dcBA|dAFA fgec|d2d2d2:|

The Harvest Home (hornpipe)

Willie Clancy setting
file ID: dmwc/075harv

The image shows a musical score for 'The Harvest Home (hornpipe)'. It consists of six staves of music in treble clef, with a key signature of one sharp (F#) and a common time signature (C). The music is written in a hornpipe style, characterized by eighth and sixteenth notes. The score includes various musical notations such as triplets (indicated by a '3' over a group of notes), repeat signs, and first/second endings. The staves are numbered 1 through 21, with some numbers appearing at the beginning of a staff and others at the end of a measure. The music concludes with a double bar line.

X:75

T:Harvest Home (hornpipe), The

C:Willie Clancy setting

B:DMWC.44

C:file ID: dmwc/075harv

M:C

L:1/8

Q:150

R:hornpipe

K:D

DAFA DAFA|dgfe dcBA|eafa gafd|(3ege (3dcB (3ABA (3GFE|
"5"DAFA DAFA|dgfe dcBA|eAfA (3gfe ce |1 dgfe d2A2 :|2 (3dcd (3gfe d2 ||
cd|"9"eAA2 fAA2|gAA2 fAA2|eAfA gAfA|(3ege (3dcB (3ABA (3GFE|
"13"D2 (3FGA AD (3FGA|GBfe dcBA|eAfA (3gfe ce|dgfe d2gf|
"17"eA (3BcA fA (3BcA|ga (3BcA fA (3BcA|eAfA gAfA|(3ege (3dcB (3ABA (3GFE|
"21"D2 (3FGA DAFA|dgfe dcBA|eAfA (3gfe ce|dgfe dA A2 ||

The Harvest Home (hornpipe)

file ID aif/085harv

Musical notation for the first four staves of 'The Harvest Home (hornpipe)'. The music is in G major (one sharp) and 4/4 time. It features a mix of eighth and sixteenth notes, with several triplet markings (indicated by a '3' above the notes) in the second, third, and fourth staves. The piece concludes with a double bar line and repeat dots.

simplified version

Musical notation for the simplified version of 'The Harvest Home (hornpipe)'. This section consists of four staves of music in G major (one sharp) and 4/4 time. The notation is simpler than the original, using mostly eighth and sixteenth notes without triplet markings. It concludes with a double bar line and repeat dots.

X:85
T:The Harvest Home (hornpipe)
B:AIF.085
C:file ID aif/085harv
Z:Brennan/Black
M:4/4
L:1/8 % dotted rhythm
Q:150
R:hornpipe
K:D
AF|DAFA DAFA|defe dcBA|eAfa gAfa|(3efe (3dcB AGFE|
DAFA DAFA|defe dcBA|eAfa gece|d2f2d2:|
cd|eA (3AAA fA (3AAA|gA (3AAA fA (3AAA|eAfa gAfa|\
(3efe (3dcB (3ABA (3GFE|
DAFA DAFA|defe dcBA|eAfa gece|d2f2d2:|
%
P:simplified version
AF|DAFA DAFA|defe dcBA|eAfa gAfa|e2dB AGFE|
DAFA DAFA|defe dcBA|eAfa gece|d2f2d2:|
cd|eAA2 fAA2|gAA2 fAA2|eAfa gAfa|e2dB A2GE|
DAFA DAFA|defe dcBA|eAfa gece|d2f2d2:|