

The High Road to Linton (reel)

file ID: cre.3/079high_r



X:079

T:High Road to Linton (reel)

B:CRE3.166 (Bóthar Mór go Linton)

C:file ID: cre.3/079high_r

N:CRE doesn't repeat the first four measures.

R:reel

L:1/8

Q:180

M:C

K:A

cefe a3g|fece faaB|cefe a3e|f2ec BcAB:|

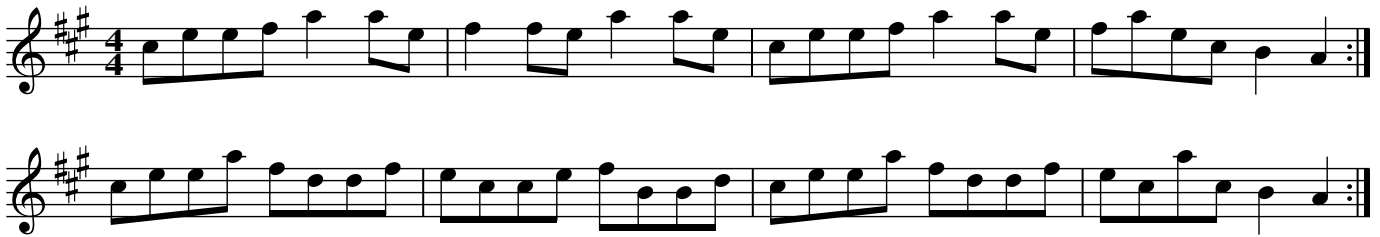
ceea fdd/c/d|ecc/B/c dBB/A/B|ceea faec|dacg aAAB|

ceea fdd/c/d|ecc/B/c dBB/A/B|ceea faec|d2Bd cAA2||

High Road to Linton (fling)

file ID:fs.3/042high_r

FS3.32b [usually played as a reel]



X:42

T:High Road to Linton (fling)

C:file ID:fs.3/042high_r

B:FS3.32b

N:Usually played as a reel.

M:4/4

L:1/8

Q:150

R:hornpipe

K:A

ceef a2ae|f2fe a2ae|ceef a2ae|faec B2A2 :|

ceea fddf|ecce fBBd|ceea fddf|ecac B2A2 :|