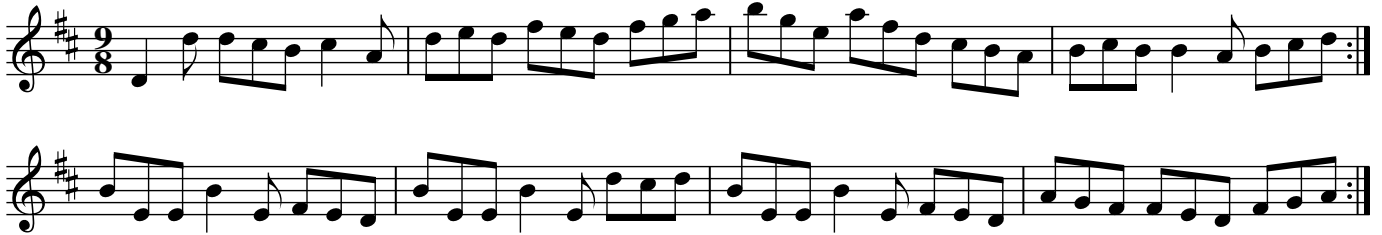


Roudledum (1st setting)

file ID: onmi.sjigs/044rdum1



X:44

T:Roudledum (1st setting)

B:ONMI.1125

F:file ID: onmi.sjigs/044rdum1

N:Rests removed in mm 1,4(?),5,6,7; "scribal error"
corrected in m.4

R:slip jig

Q:160

M:9/8

L:1/8

K:D

D2d dcB c2A|ded fed fga|bge afd cBA|BcB B2A Bcd:|
BEE B2E FED|BEE B2E dcd|BEE B2E FED|AGF FED FGA:|